

## Explosion Proof Equipment

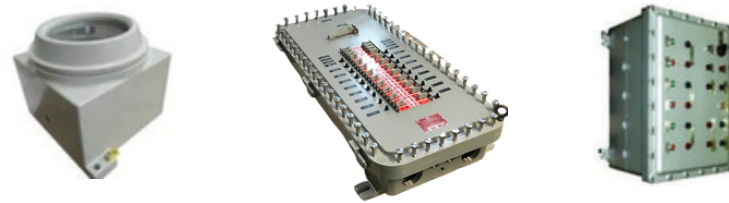
- Nema 7 Explosion – Proof Cast enclosures and control stations
- J- Boxes, Instrument and Meter housings & Push Button Stations
- Conduit fittings and pilot devices
- Explosion proof circuit breakers and disconnects
- Explosion Proof Panelboards
- UL, CSA, ATEX, and IECEx Approved



## BARTEC

- UL/FM Class 1, Division 2, NEMA 4X & IP 67, 316 Cast Aluminum & Stainless Steel
- Certified for ATEX, CSA, TR CU, Inmetro & IECEx Zone 1 & 2; EJB series rated -20C to +60C, GUB series -20C to +80C, IP 68
- Drilling options available; gland plates can be fitted on any or all sides
- Windows offered in round or square for EJB, round for GUB Series

## Explosion Proof Enclosures



# PRODUCT LINE CARD



## AREL

## Safety Locks for Electrical Equipment

- Bolt Locks, Camlocks, Key Switches
- Customer handles, locks & mechanical
- Interlocking system production
- Lock Out Tag Out Devices
- Light & Heavy Duty Design Made in Italy



## EATON Capri/Redapt

- UL Class 1, Zone 1 & 2 AEXE compliant, NEMA 4X
- ATEX, CSA, TR CU, Inmetro & IECEx Class 1 Zone 1, 2, 21, 22 IP 67 for marine cables
- Armored options available for various steel wire types
- Full range of explosion-proof EXd/increased safety Exe fittings in brass or stainless steel
- ETL Class 1, Division 2 Zone 1 & 2 AEXE compliant, NEMA 4X

Materials: brass, mild steel, 316L stainless steel; sizes: M16 to M75 or NPT 1/2" to 4".

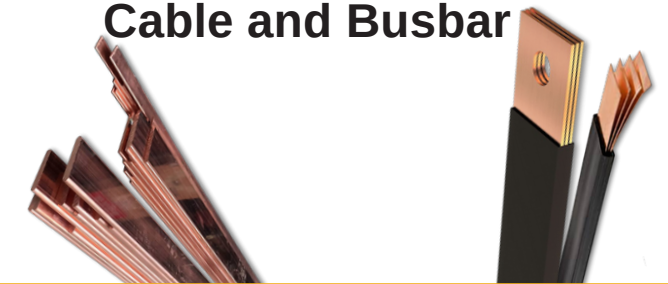
## Cable Glands & Breathers & Plugs



## GINDRE COPPER

## Cable and Busbar

- MAXIFLEX: the best of both cable and busbar
- Near Zero Bending Radius
- Distribute up to 2000 Amps with a single flat cable
- UL 758 Appliance Wiring & UL 67 Panelboards
- Supports up to 1000 volts at temps up to 105 C
- Engineered to design to your company needs



## Warning Signals

- Hazardous area signaling devices certified to UL, cUL, IECEx, and ATEX standards.
- Visual signaling using Xenon and LED technology.
- Audible signaling compliant with SIL1 and SIL2.
- Combination of audible and visual signaling options.
- Includes manual alarm call points, alarm bars, and heat detectors.
- 10-year warranty ensuring proven reliability.



## LS Busway & Switchgear

- Medium Voltage Switchgear
- Low Voltage Switchgear
- Panelboards
- Transformers
- Breakers
- Busway – UL Series
- Data Busway



## Multi Cable and Pipe Transit

- Hazardous locations ATEX / IECEx / Class & Div 1 & 2
- Seals against passage of Fire, Water, Gas and Environmental Conditions
- Ingress Protection IP65, IP67, IP66, Nema 250 - type 3R, 4X, 1
- Bonding and Grounding - Putting Safety First



## Customizable UPS & Battery Back-Up Systems

- Power range from 400VA to 20000VA
- 110V to 240V
- 300W – 500W DIN Rail UPS
- Battery back-up for Traffic and Ruggedized applications
- Battery-less and energy efficient Super capacitor UPS
- UPS communication, remote signaling & networking capability



## Gas and Flame Detection

- Class I Division 2 and ATEX certified.
- Slim Line, Ice Cube and Relay Interface Modules.
- cULus listed devices.
- Complies with EN 60079-0 and 60079-15 standards.
- Suitable for chemical, petrochemical, pharmaceutical, LPG, LNG, power plant, spray booth or underground applications.
- C102, ATEX, IECEx, DC Breakers



## Industrial Computers

- Enclosures for Displays / Printers / Large Panels / Scanners / Keyboards / Pointing Devices
- NEMA 12 / 4 / 4X / IP69K / Hazardous Area / Outdoor
- Accepts PCs / IPCs / Thin Clients / KVMs / Rack Mounts
- Fixed / Mobile / Custom Mounting
- Fast Component Change Overs
- Clean Sheet Low / High Volume Custom Designs

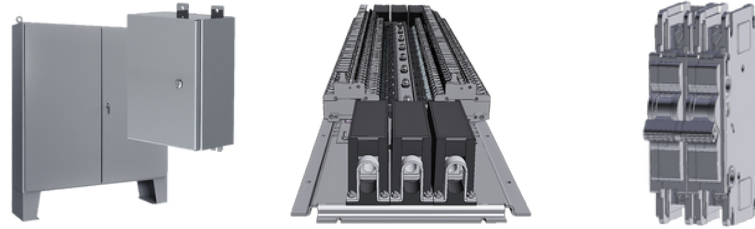






## Nema Enclosures

- Low Voltage Enclosures
- Power Distribution Panel Boards
- Miniature Circuit Breakers
- Medium Voltage Enclosures
- Enclosed Disconnects
- Metal Fabrication Services



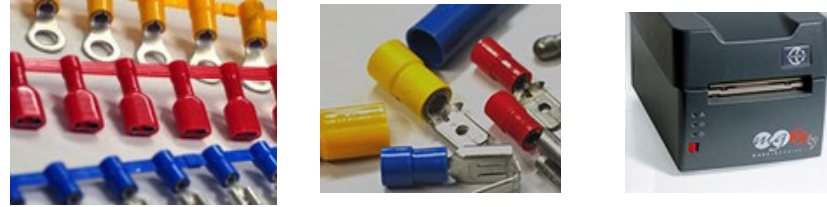
## Non-metallic and Polycarbonate Enclosures

- JIC style enclosure, available in 6 sizes from 8x6 to 18x16
- Industrial polycarbonate material with clear or solid covers
- Multiple options for latching the cover
- European Style enclosures available in polycarbonate and GRP
- Models available with metric and/or pg knockouts
- Factory Customization available
- NEMA 4X / IP67, IP68, & IP69 rated



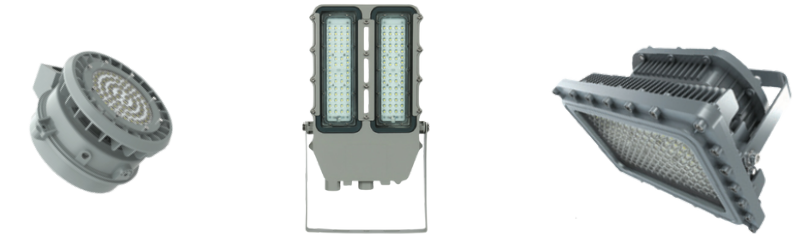
## Terminals / Tools / Labels

- Thermal Transfer Printers
- Electrical Connectors
- Installation Tooling and Equipment
- Identification & Labeling Systems
- Terminal Block Markers
- Power Distribution Blocks



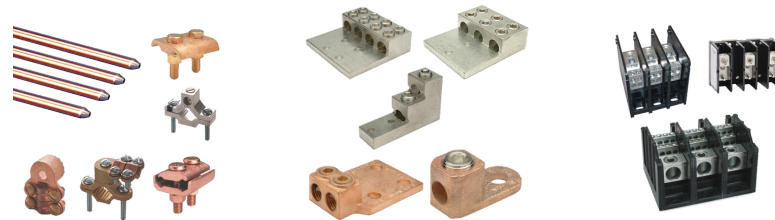
## Commercial, Industrial & HAZ LOC LED Lighting

- In stock LED commercial/industrial retrofit solutions
- In stock LED fixtures with a 6 year warranty
- UL/ETL/DLC/FCC/CE/RoHS certified
- Lighting layouts
- Color/power selectable options
- NO FREIGHT, NO MIN, NO RESTOCKING FEES
- IECEX / ATEX/NEC / UL / ABS Certified
- UL844 Class 1 Division 1 & 2
- Move No Frieght. No Min, No Restocking Fees to bottom line of description



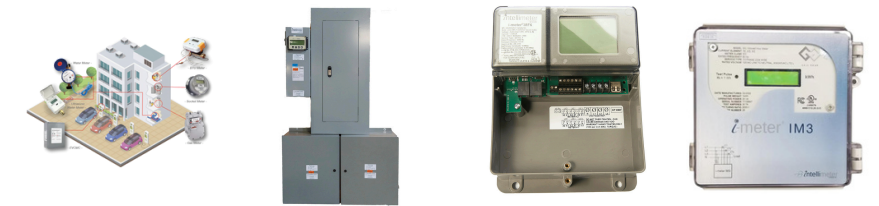
## Mechanical & Compression Lugs / Solar

- Power Distribution blocks
- Mechanical & compression lugs
- Solar cable & infrastructure
- MC4 connectors
- clean energy grounding solutions
- industrial UL Grounding solutions
- all products UL listed



## SUB - Metering Systems

- Sub Meters to improve electrical efficiency
- Real-time usage information for electricity, water, gas, heating, & cooling
- Perfect for installation of EV charging stations in multi-unit buildings
- Electric Vehicle Management System for utilizing existing electrical capabilities
- Energy Analysis & Billing / Data Collection



## Braking, Case, & Ground Resistors

- Braking Resistors
- Braking Resistor Replacements
- Case Resistors
- Edgewound Resistors
- Grid and Ribbon Resistors
- Harmonic Filters
- High Resistance Grounding System
- Neutral Grounding Resistors
- Oil and Gas Braking
- Smoothwound Resistors
- Wirewound Resistors



## Stainless, Coated, Nylon Ties & Banding

- Largest Line of Stainless Steel Cable Ties in Industry
- Highest Tensile Strengths in Industry (The Strongest Around)
- ABS TYPE Approved (SS Ties, Banding, & Buckles)
- UL Listed (SS Ties, Nylon Ties)
- Made in the USA (SS Ties, Banding, ID Tags)
- 24 Hour Turn Around Time for Embossed Tags



## Temporary Power

- UL/FM Class 1, Division 2, NEMA 4X & IP 67, 316 Cast Aluminum & Stainless Steel
- Full compliment of custom temporary power solutions for hazardous or non-hazardous areas
- Power distribution cubes, master, and slave units provide comprehensive and safe solutions
- Ideal for plant shut downs and turnarounds
- All products made in Houston, Texas



## LED Commercial and Industrial Lighting

- US Based Commercial & Industrial LED Lighting Manufacturer
- Area, Canopy, Flood, Wall Packs, and High Bay Light Fixtures
- Exit & Emergency Lighting
- Poles & Brackets with Outdoor Lighting
- Partners with Autani Sensors for Smart Lighting

