



Commercial, Industrial & HAZ LOC LED Lighting

- In stock LED commercial/industrial retrofit solutions
- In stock LED fixtures with a 6 year warranty
- UL/ETL/DLC/FCC/CE/RoHS certified
- Lighting layouts
- Color/power selectable options
- NO FREIGHT, NO MIN, NO RESTOCKING FEES
- IECEX / ATEX/NEC / UL / ABS Certified
- UL844 Class 1 Division 1 & 2
- Move No Frieght. No Min, No Restocking Fees to bottom line of description



PRODUCT LINE CARD



LS Busway & Switchgear

- Medium Voltage Switchgear
- Low Voltage Switchgear
- Panelboards
- Transformers
- Breakers
- Busway – UL Series
- Data Busway



LED Commercial and Industrial Lighting

- US Based Commercial & Industrial LED Lighting Manufacturer
- Area, Canopy, Flood, Wall Packs, and High Bay Light Fixtures
- Exit & Emergency Lighting
- Poles & Brackets with Outdoor Lighting
- Partners with Autani Sensors for Smart Lighting



Terminals / Tools / Labels

- Thermal Transfer Printers
- Electrical Connectors
- Installation Tooling and Equipment
- Identification & Labeling Systems
- Terminal Block Markers
- Power Distribution Blocks



Stainless, Coated, Nylon Ties & Banding

- Largest Line of Stainless Steel Cable Ties in Industry
- Highest Tensile Strengths in Industry (The Strongest Around)
- ABS TYPE Approved (SS Ties, Banding, & Buckles)
- UL Listed (SS Ties, Nylon Ties)
- Made in the USA (SS Ties, Banding, ID Tags)
- 24 Hour Turn Around Time for Embossed Tags



Electrical Tapes

* AZ, NV, and UT only

- Professional grade electrical tapes
- Wide range of products for multiple general and specific applications
- Premium vinyl tapes – UL, CSA certified, all weather
- High and low voltage rubber self-bonding tapes
- Specific solutions for mining and cable jacket repair
- Manufacturers since 1896
- Technical team available for support



GracePorts

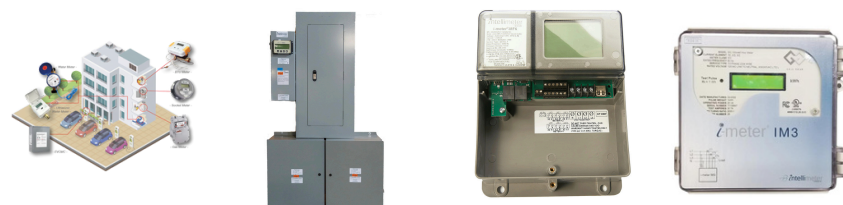
* UT only

- GracePorts
- Grace PESD Voltage Indicators
- Grace Sense
- Continuous monitoring/alerting for predictive maintenance.



SUB Metering Systems

- Sub Meters to improve electrical efficiency
- Real-time usage information for electricity, water, gas, heating, & cooling
- Perfect for installation of EV charging stations in multi-unit buildings
- Electric Vehicle Management System for utilizing existing electrical capabilities
- Energy Analysis & Billing / Data Collection



Cable and Busbar

- MAXIFLEX: the best of both cable and busbar
- Near Zero Bending Radius
- Distribute up to 2000 Amps with a single flat cable
- UL 758 Appliance Wiring & UL 67 Panelboards
- Supports up to 1000 volts at temps up to 105 C
- Engineered to design to your company needs





Nema Enclosures

- Low Voltage Enclosures
- Nema 1, 3R, 4X, and Nema 12
- Manufactured in Tennessee
- Medium Voltage Enclosures
- Enclosed Disconnects
- Metal Fabrication Services



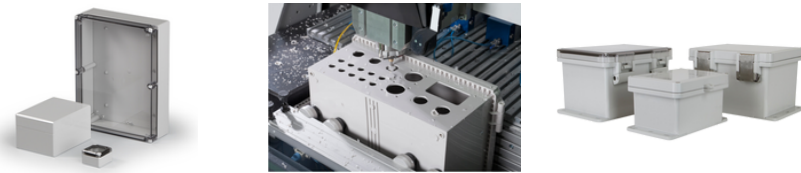
Safety Locks for Electrical Equipment

- Bolt Locks, Camlocks, Key Switches
- Customer handles, locks & mechanical
- Interlocking system production
- Lock Out Tag Out Devices
- Light & Heavy Duty Design Made in Italy

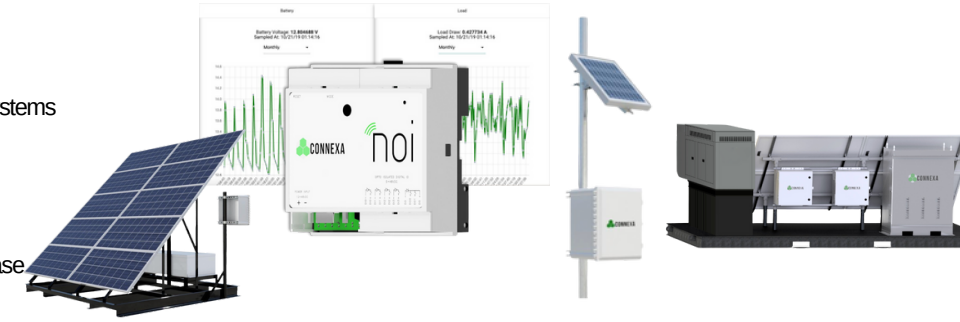


Non-metallic and Polycarbonate Enclosures

- JIC style enclosure, available in 6 sizes from 8x6 to 18x16
- Industrial polycarbonate material with clear or solid covers
- Multiple options for latching the cover
- European Style enclosures available in polycarbonate and GRP
- Models available with metric and/or pg knockouts
- Factory Customization available
- NEMA 4X / IP67, IP68, & IP69 rated



- Manufacturer and supplier of remote solar power products and systems
- Headquartered in Texas
- Connexa's NOI provides a solution for remote monitoring, troubleshooting, and predictive/preventative maintenance
- Cloud based communication systems; 4G/IoT/Ethernet
- Hybrid Power Skid- All-in-One Solution - 3 Phase AC , Single Phase AC , DC, 120V-240V, 277V-480V, C1D2 Available



- Engineered and built in North America
- Flexible charging capability – including Solar Panels!
- Remote Monitoring
- In-house technical support
- Reduce operational costs by up to 90%

Full Site Power

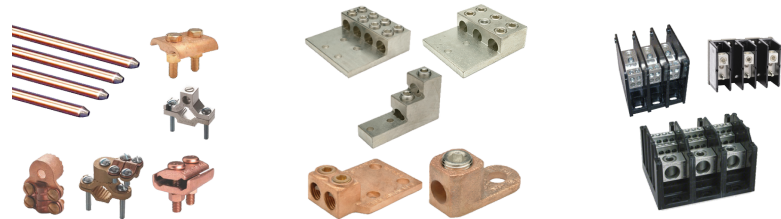


- Modular Buildings
- Light weight prefab, precision-formed, modular panels designed for accurate, rapid field assembly
- Extruded Polystyrene or Expanded Polystyrene 4" insulated core
- Cam-action locking devices for single tool installation
- Industrial, Construction and Communications Applications
- Wide variety of sizes and configuration options
- Electrical and HVAC options



Mechanical & Compression Lugs / Solar

- Power Distribution blocks
- Mechanical & compression lugs
- Solar cable & infrastructure
- MC4 connectors
- clean energy grounding solutions
- industrial UL Grounding solutions
- all products UL listed



Braking, Case, & Ground Resistors

- Braking Resistors
- Braking Resistor Replacements
- Case Resistors
- Edgewound Resistors
- Grid and Ribbon Resistors
- Harmonic Filters
- High Resistance Grounding System
- Neutral Grounding Resistors
- Oil and Gas Braking
- Smoothwound Resistors
- Wirewound Resistors



Customizable UPS & Battery Back-Up Systems

* UT only

- Power range from 400VA to 20000VA
- 110V to 240V
- 300W – 500W DIN Rail UPS
- Battery back-up for Traffic and Ruggedized applications
- Battery-less and energy efficient Super capacitor UPS
- UPS communication, remote signaling & networking capability



Gas and Flame Detection

* CA only

- Class I Division 2 and ATEX certified.
- Slim Line, Ice Cube and Relay Interface Modules.
- cULus listed devices.
- Complies with EN 60079-0 and 60079-15 standards.
- Suitable for chemical, petrochemical, pharmaceutical, LPG, LNG, power plant, spray booth or underground applications.
- C102, ATEX, IECEx, DC Breakers

